

# **mycoke Virtual Experience Migration 2007**

## **Site Enhancements :: Development & Design**

**User Experience Wireframes – v2.0**  
11/14/07

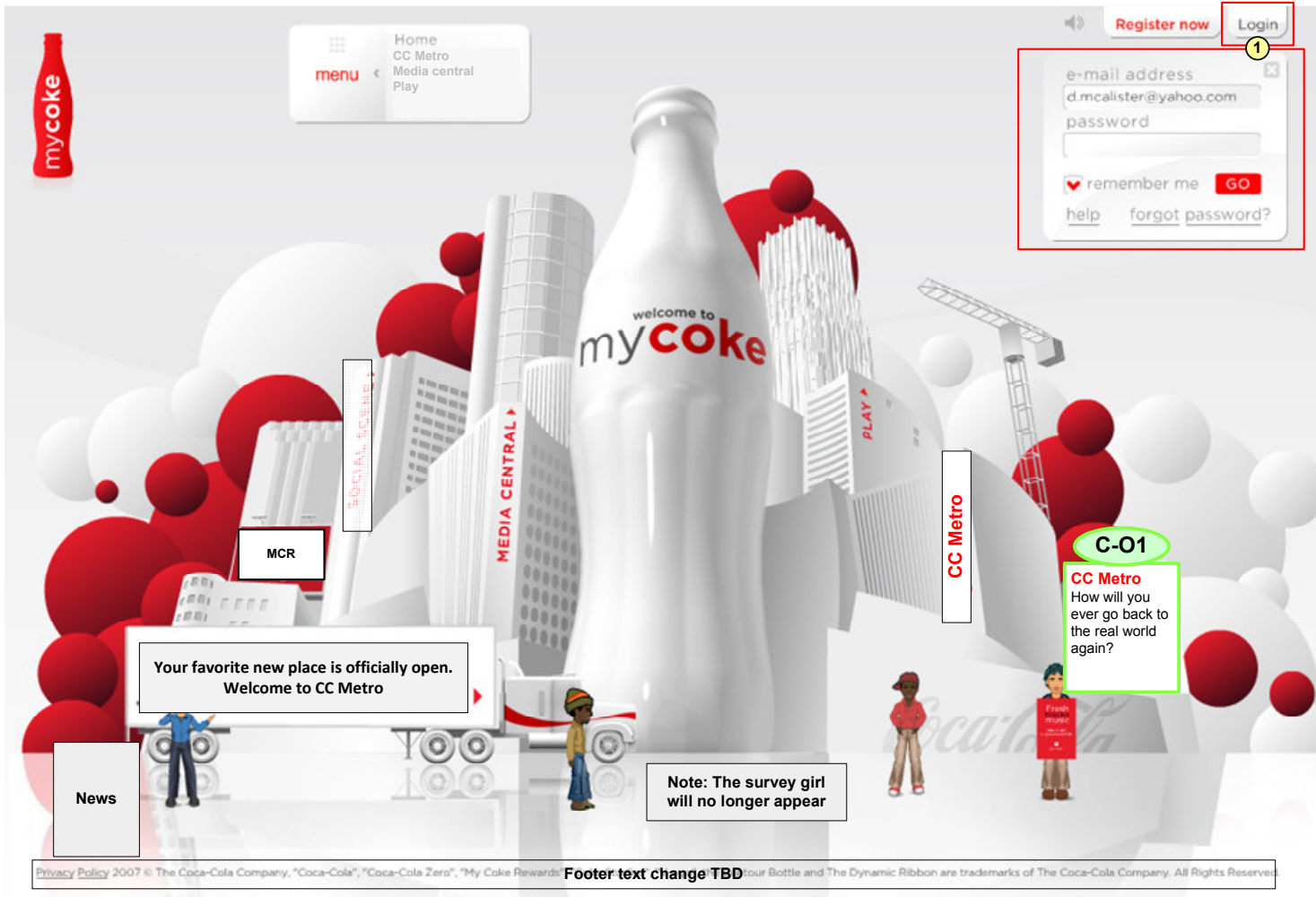


## Notes

### Home Page-Unauthenticated

This is the entry point for most users

- 1.) The new global navigation now consists of
  - Home
  - CC Metro
  - Media central
  - Play
- 2.) Social Scene will no longer be available on this site, so the navigation must be removed.
- 2.) The billboard will highlight the new CC Metro VE.
- 3.) This billboard will drive people to MCR.
- 4.) Coke Studios will no longer be available on this site; this navigation will change to CC Metro.
- 5.) Widgets and new furni will no longer be available, so this billboard content will replace the Widgets and new furni links.
- 6.) The MCR banner will be replaced with a CC Metro VE banner.
- 7.) The News box will appear on this page.
- 8.) The Survey Girl will no longer appear on this site due to surveys being disabled.
- 9.) There will be a change to the footer copy (TBD).

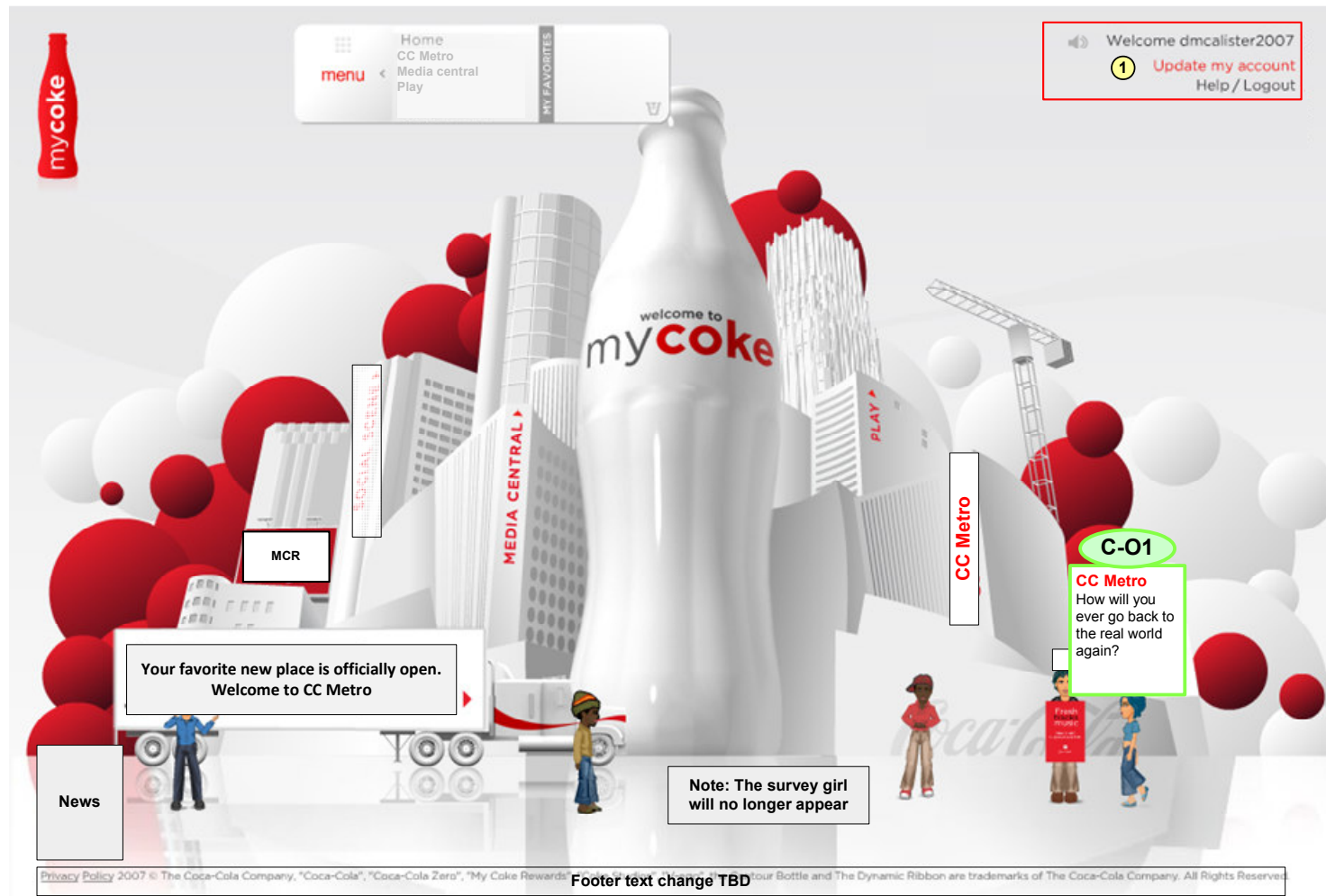


## Notes

### Home Page-Login

Note: Same comments as in the Home Page-Unauthenticated. This page simply reflects the user clicking on the Login button.

1.) When the user clicks on the "Login" button, the login form appears.



## Notes

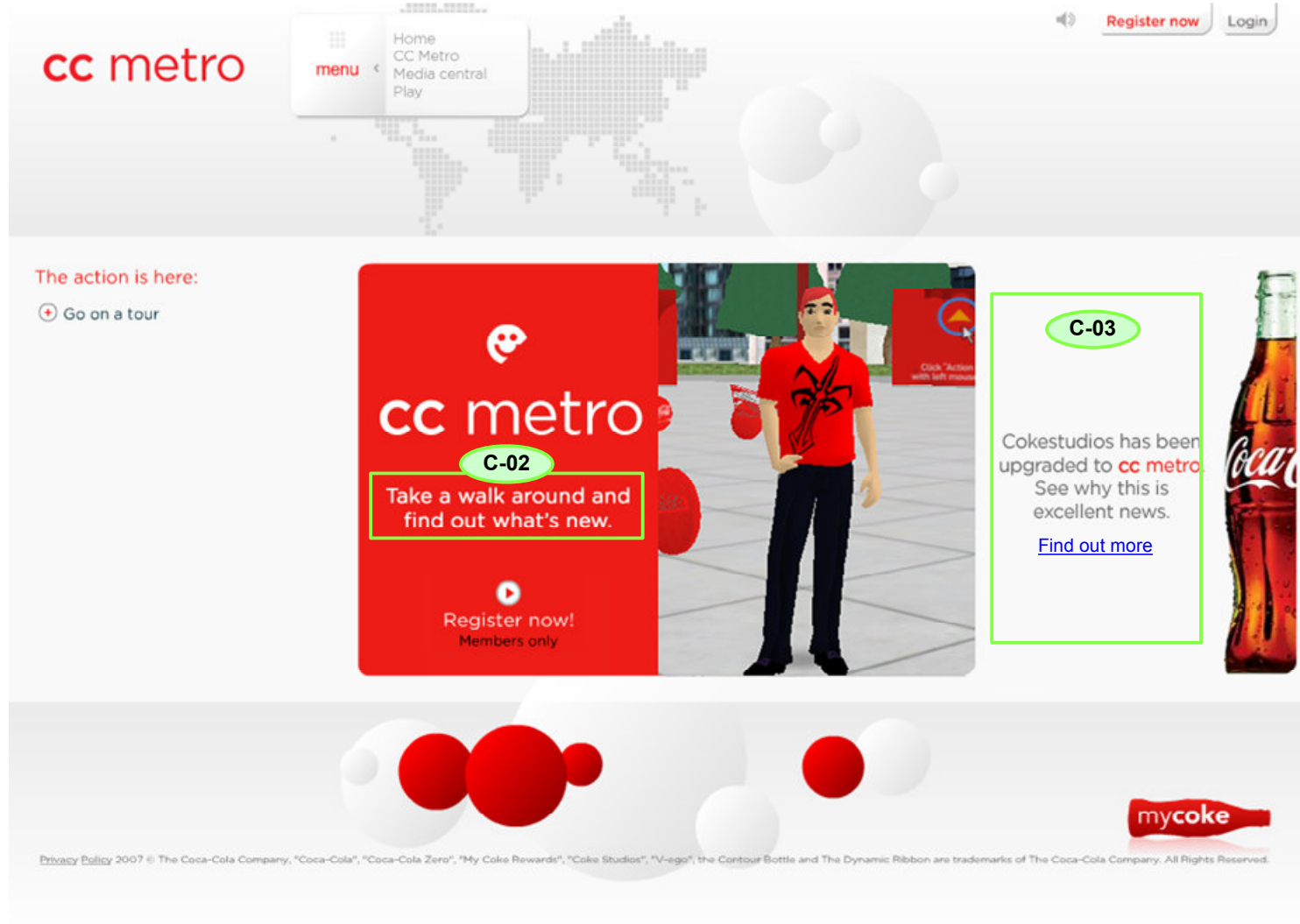
### Home Page-Authenticated

Note: See comments on the Home Page-Unauthenticated for global changes.

1.) Once the user logs in, the following information will appear on this page:

- Welcome [screen name];
- Update my account
- Help/Logout

Note that "Decibel tracker | Create Blogs | Messenger" and "Decibels earned" are no longer available.



Notes
CC Metro Landing Page-Unauthenticated



#### Notes

##### CC Metro Landing Page-Login

Note: Same comments as in the "CC Metro Landing Page-Unauthenticated." This page simply reflects the user clicking on the Login button.

1.) When the user clicks on the "Login" button, the login form appears.





## Notes

### CC Metro Landing Page-Authenticated

Note: See comments on the "CC Metro Landing Page-Unauthenticated" for global changes.

1.) Once the user logs in, the following information will appear on this page:

- Welcome [screen name];
- Update my account
- Help/Logout

Note that "Decibel tracker | Create Blogs | Messenger" and "Decibels earned" are no longer available.

**NOTE:** Eligible users who click on "Go to CC Metro" who linked their accounts (mycoke and CC Metro) through MCR – and whose assets were not migrated link their mycoke accounts with their CC Metro accounts through MCR – will have their assets transferred at this time and taken directly to the Congratulations page prior to entering the CC Metro VE.

cc metro

Welcome dmcalister2007  
[Update my account](#)  
[Help / Logout](#)

C-04

CC Metro exists in the world of Internet Explorer. Launch Internet Explorer now to continue or, if you don't have Internet Explorer on your computer, we'll help you out. Just click below.

CC Metro is not currently available for Macs.

Get Internet Explorer Now

Continue

Take the new survey &gt;

Privacy Policy 2007 © The Coca-Cola Company. "Coca-Cola", "Coca-Cola Zero", "My Coke Rewards", "Coke Studios", "V-ego", the Contour Bottle and The Dynamic Ribbon are trademarks of The Coca-Cola Company. All Rights Reserved.

## Notes

## IE Warning

The application can automatically detect which type of browser is being used to access this page. If the user is not using Internet Explorer (IE), this message will display.

The user will have the option to:

- Click the "Continue" button to continue the registration process using the current browser – knowing that the CC Metro environment cannot be accessed without IE
- Launch IE if it is currently on the user's computer\*
- Click on the "Get IE Now" button (or access IE via another method) to download and launch IE\*

(\* Note that with the second and third options, the user must log in again to mycoke – as the user session from another browser cannot be continued.)

*As in all pages on this site, effective messaging will be critical to ensure the user knows what must be done, and why. In this case, the system has detected that the user is not using Internet Explorer. The messaging must explain that the user may be able to complete the registration and access limited functionality with a non-IE browser; however, they must use IE to access the CC Metro environment.*



## cc metro registration

### REGISTRATION WORKFLOW #1

The "CC Metro Registration page" will be presented to most users wishing to register for CC Metro.

*Note: Only those users flagged as being eligible to link their mycoke account with their There.com account will be presented the Registration Workflow #2 – and corresponding "CC Metro Linkage/Registration pages."*

Welcome dmcalister2007  
Update my account  
Help / Logout

Graphic

### cc metro registration

C-05

#### Make yourself part of CC Metro Now

Sign up now – your mycoke account gives you easy and automatic access to the CC Metro experience.

#### Choose an Avatar name:

This will be your username in There, so pick a good one because you won't be able to change your avatar name later.

#### Choose a gender: ☐ Female ☒ Male

#### Choose a starter look

Choose a basic look to get going. Don't worry, you can further customize these aspects of your avatar later by visiting a spa once you're in There!

Choose your hair color/style:

☐ Option 1
 ☐ Option 2
 ☐ Option 3

Choose your skin tone:

☐ Option 1
 ☐ Option 2
 ☐ Option 3

#### Create a password

Your password must be at least six characters long and cannot include spaces.

Choose password:

Verify password:

Submit  Cancel

Global Footer

### Error Messages

C-06

That's a cool name, but unfortunately it's already taken. Try another.

Choose a hairstyle. No worries, just like real hair you can change it later.

Select a skin tone to continue.

Your password must be at least 6 characters long – create one you won't forget!

Hey, those passwords didn't match. Wanna try again?

### Notes

#### 1.) Choose a name functionality:

- If the user does not have a mycoke screen name, this editable text field will remain blank allowing the user to enter his/her preferred screen name.
- If the user has a mycoke screen name, this field will be auto-populated with the user's existing mycoke screen name if this screen name is available in the CC Metro environment.
- If the user's mycoke screen name is not available in the There.com environment, the system will auto-generate three alternate options. The user may select one of the auto-generated screen name options, or enter a preferred screen name in addition to the existing editable text box.

*NOTES: If the screen name that the user manually enters into this form is not available, an error message will display. The UI for displaying these alternate screen name options is TBD.*

#### 2.) Gender is auto-populated with the information pulled from the GDMP, with the option to change.

3.) The thumbnails in "Choose your hair color/style" change based on whether the female or male radio button is selected in the field above. ("Choose your skin tone" thumbnails do not change.)

4.) The user must Choose and Validate a password. If password does not meet the CC Metro password requirements, or if the Choose password and Validate Password fields to not match, the user will receive a descriptive error message.

5.) CHAPTCHA Functionality has been removed.

6.) The "weekly newsletters" and "product updates" opt-in check boxes currently available on There.com will not be included in the CC Metro registration form.

7.) When the user clicks on the Submit button, he/she is taken to the Congratulations page if there are no errors. When the user clicks on the Cancel button the user is taken to the authenticated CC Metro landing page.

**NOTE: Users accept the There.com Ts & Cs upon the first engagement with the There.com client. This happens on Makena's side and does not impact Studiocom's work.**

cc metro registration

REGISTRATION WORKFLOW #1

The “CC Metro Registration page” will be presented to most users wishing to register for CC Metro.  
*Note: Only those users flagged as being eligible to link their mycoke account with their There.com account will be presented the Registration Workflow #2 – and corresponding “CC Metro Linkage/Registration pages.”*

Welcome dmcalister2007  
[Update my account](#)  
[Help / Logout](#)

Graphic

We’re sorry, the email address xxxxxxxx is already in use at There.com.  
Please enter a different email address:

Choose an Avatar name:

Choose a gender: ☐ female ☐ male

Choose a starter look

Choose a basic look to get going. Don’t worry, you can further customize these aspects of your Avatar later by visiting a spa.

Choose your hair color/style:



☐ option 1 ☐ option 2 ☐ option 3

Choose your skin tone:



☐ option 1 ☐ option 2 ☐ option 3

Create a password

Your password must be at least six characters long and cannot include spaces.

Choose password:

Verify password:

[Submit](#) [Cancel](#)

Error Messages

We’re sorry, the email address xxxxxxxx is already in use at There.com. Please enter a different email address:

Notes

- 1.) Choose a name functionality:
  - If the user does not have a mycoke screen name, this editable text field will remain blank allowing the user to enter his/her preferred screen name.
  - If the user has a mycoke screen name, this field will be auto-populated with the user’s existing mycoke screen name if this screen name is available in the CC Metro environment.
  - If the user’s mycoke screen name is not available in the There.com environment, the system will auto-generate three alternate options. The user may select one of the auto-generated screen name options, or enter a preferred screen name in addition to the existing editable text box.  
*NOTES: If the screen name that the user manually enters into this form is not available, an error message will display. The UI for displaying these alternate screen name options is TBD.*
- 2.) Gender is auto-populated with the information pulled from the GDMP, with the option to change.
- 3.) The thumbnails in “Choose your hair color/style” change based on whether the female or male radio button is selected in the field above. (“Choose your skin tone” thumbnails do not change.)
- 4.) The user must Choose and Validate a password. If password does not meet the CC Metro password requirements, or if the Choose password and Validate Password fields to not match, the user will receive a descriptive error message.
- 5.) CHAPTCHA Functionality has been removed.
- 6.) The “weekly newsletters” and “product updates” opt-in check boxes currently available on There.com will not be included in the CC Metro registration form.
- 7.) When the user clicks on the Submit button, he/she is taken to the Congratulations page if there are no errors. When the user clicks on the Cancel button the user is taken to the authenticated CC Metro landing page.

**NOTE: Users accept the There.com Ts & Cs upon the first engagement with the There.com client. This happens on Makena’s side and does not impact Studiocom’s work.**

## cc metro registration

### REGISTRATION WORKFLOW #2

The CC Metro Linkage/Registration page will only be available:

- For six months after launch (through June 6, 2008) – *and*
- Only displayed to those users who are flagged in the GDMP as being eligible for migration.

All other users will be provided the CC Metro Registration Page.

Welcome dmcalister2007  
Update my account  
Help / Logout

### Notes

#### CC Metro/There.com Linkage (Page 1 of 2)

**NOTE:** The "CC Metro Linkage/Registration" pages will only be available for six months after launch (through June 6, 2008) – *and* only displayed to those users who are flagged in the GDMP as being eligible for migration. All other users will be provided the CC Metro Registration Page.

This screen allows users to register on CC Metro; or if they are a current member of There.com, they may login by entering their There.com Avatar name and password.

- 1.) If the user is not currently a member of There.com, they may click on the CC Metro Registration link, which takes them to the CC Metro Registration Page.
- 2.) If, however, they are a member of There.com, they can enter their Avatar name and password to bypass the CC Metro Registration process. (Note: The user's account information and corresponding assets will be migrated to the CSS (Coke Shared Database) upon submission of this page.
- 3.) We will provide a link to There.com help (<https://webapps.prod.there.com/login/loginhelp.html>)
- 4.) Error messages go in the right rail, matching current mycoke functionality.

Graphic

C-05

### Make yourself part of CC Metro Now

Sign up now – your mycoke account gives you easy and automatic access to the CC Metro experience. Worried about your leftover furni? Don't be – they'll convert themselves into Therebucks, the official currency of CC Metro.

### Are You a Currently a Member of There.com?

If you are not a current member of There.com Please click here to register: [CC Metro Registration](#) ①

If you are a member of There.com, login here Please enter your There Avatar Name and Password below:

Avatar Name:   
Password:

[There.com help](#) ③

Log In

### ④ Error Messages

- Hey, either your avatar name or password is incorrect. Wanna try again?
- Hey, we need both your avatar name and password. Wanna try again?
- Sorry, we were not able to process your information. Wanna try again?

# cc metro registration

## REGISTRATION WORKFLOW #2 (Continued)

Welcome dmcalister2007  
Update my account  
Help / Logout

Graphic

### cc metro registration

**Choose an Avatar name:**  ①

This will be your username in There, so pick a good one because you won't be able to change your avatar name later.

**Choose a gender:** ☐ Female ☒ Male ②

#### Choose a starter look

Choose a basic look to get going. Don't worry, you can further customize these aspects of your avatar later by visiting a spa once you're in There!

Choose your hair color/style: ③

☐ Option 1
☐ Option 2
☐ Option 3

Choose your skin tone:

☐ Option 1
☐ Option 2
☐ Option 3

#### Create a password

Your password must be at least six characters long and cannot include spaces.

Choose password:  ④  
Verify password:  ⑤ ⑥

Submit  Cancel  ⑦

Global Footer

### Error Messages

C-06

That's a cool name, but unfortunately it's already taken. Try another.

Choose a hairstyle. No worries, just like real hair you can change it later.

Select a skin tone to continue.

Your password must be at least 6 characters long – create one you won't forget!

Hey, those passwords didn't match. Wanna try again?

### Notes

#### CC Metro/There.com Linkage (Page 2 of 2)

**NOTE:** The "CC Metro Linkage/Registration" pages will only be available for six months after launch (through June 6, 2008) – and only displayed to those users who are flagged in the GDMP as being eligible for migration. All other users will be provided the CC Metro Registration Page.

#### 1.) Choose a name functionality:

- If the user does not have a mycoke screen name, this editable text field will remain blank allowing the user to enter his/her preferred screen name.
- If the user has a mycoke screen name, this field will be auto-populated with the user's existing mycoke screen name if this screen name is available in the CC Metro environment.

- If the user's mycoke screen name is not available in the There.com environment, the system will auto-generate three alternate options. The user may select one of the auto-generated screen name options, or enter a preferred screen name in addition to the existing editable text box.

*NOTES: If the screen name that the user manually enters into this form is not available, an error message will display. The UI for displaying these alternate screen name options is TBD.*

#### 2.) Gender is auto-populated with the information pulled from the GDMP, with the option to change.

3.) The thumbnails in "Choose your hair color/style" change based on whether the female or male radio button is selected in the field above. ("Choose your skin tone" thumbnails do not change.)

4.) The user must Choose and Validate a password. If password does not meet the CC Metro password requirements, or if the Choose password and Validate Password fields do not match, the user will receive a descriptive error message.

5.) CHAPTCHA Functionality has been removed.

6.) The "weekly newsletters" and "product updates" opt-in check boxes currently available on There.com will not be included in the CC Metro registration form. 7.) When the user clicks on the Submit button,

he/she is taken to the Congratulations page if there are no errors. When the user clicks on the Cancel button the user is taken to the authenticated CC Metro landing page.

## cc metro registration

Welcome dmcalister2007 ①  
[Update my account](#)  
[Help / Logout](#)

### Congratulations [screenName] ①

#### The following assets have transferred from your Coke Studios account: ②

\$ XXXXX Therebucks

C-07

Your Cokestudios furni has been converted into Therebucks for you to create a new space in CC Metro. You will also receive free premium membership and port-a-zone for 30 days (actual usage). For more details about how furni is converted to Therebucks visit our [Help](#) section.

#### What's Next... ③

C-08

##### Do you need to download the software?

CC Metro lives in the There.com world so you'll need There.com software to get started. Don't worry, we've made it easy for you to download it now. [click here](#)

##### Check out the following links

[Launch CC Metro](#)  
[mycoke home](#)

Graphic

Graphic

### Notes

#### Congratulations Page

Once the user has successfully completed the registration/migration process, the user will come to the Congratulations page.

1.) The user's screen name should be reflected in both the header at the top of the page – as well as after Congratulations.

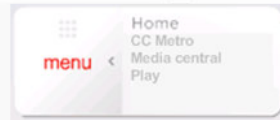
2.) Content should be very clear to reflect how many assets migrated over from his/her mycoke account. NOTE: If the user does not have any mycoke assets to migrate, this section should read:

**You will receive free premium membership and port-a-zone for 30 days (actual usage).** For more details, visit our [Help](#) section.

3.) The What's next section provides them links to:

- Download the software (if necessary)
- Launch the CC Metro environment
- Go to mycoke home

## application download



Welcome dmcalister2007  
Update my account  
Help / Logout

Graphic

### application download

Downloading CC Metro is easy! Just follow these simple steps.

**C-09**

#### Step 1: Download There.com software to access CC Metro ①

To start your download, click on the button to the right.

When you are asked, "Do you want to run or save this file?" select 'Run' as shown.

Follow the instructions for the CC Metro installer when it appears on your screen.



**Begin Download**

#### Estimated download times

- DSL/Cable modem: 15 minutes
- 56K modem: 2.5 hours

#### Step 2: Log In and Have Fun

When the download and install have finished, log in with your name and password. Have fun with your friends and meet new ones!

#### Need help?

Contact us at [help@there.com](mailto:help@there.com) or call at 866-4U-THERE (866-486-4373).  
There's Live Customer Service hours are Monday - Friday, 12 p.m. to 6 p.m. (Pacific)

**Contact/Footer Information TBD ②**

Sign Up | [What is There](#) | [Help](#) | [Company Info](#)  
© Copyright 2007 Makena Technologies. All rights reserved.

Graphic

### Notes

#### Application Download

1.) The Download Application process should follow the existing There.com process, with one exception: The registration process has been placed in front of the software download to ensure that the entire registration and migration of assets is completed before the application is downloaded and launched.

Without this change, it would be possible for the user to download the CC Metro software, then register directly through There.com instead of through the mycoke process. This would bypass the synchronization of the user's accounts/migration of their assets to the CC Metro environment.

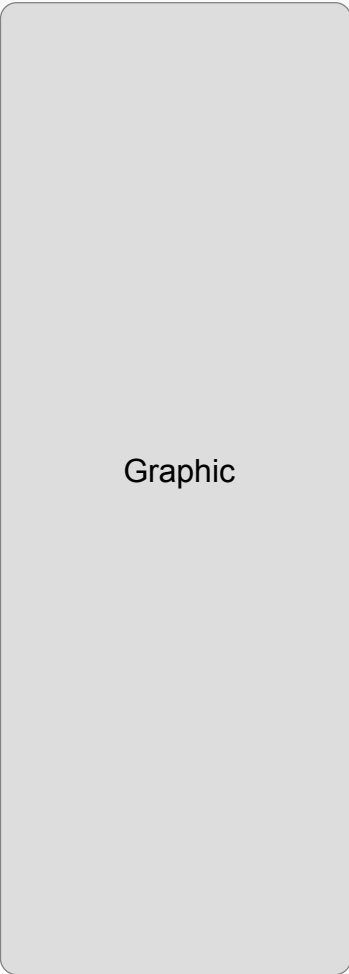
2.) Contact/Footer information TBD



cc metro registration

**NOTE: This is the MCR Version of the Congratulations Page**

Welcome dmcalister2007  
Update my account  
Help / Logout

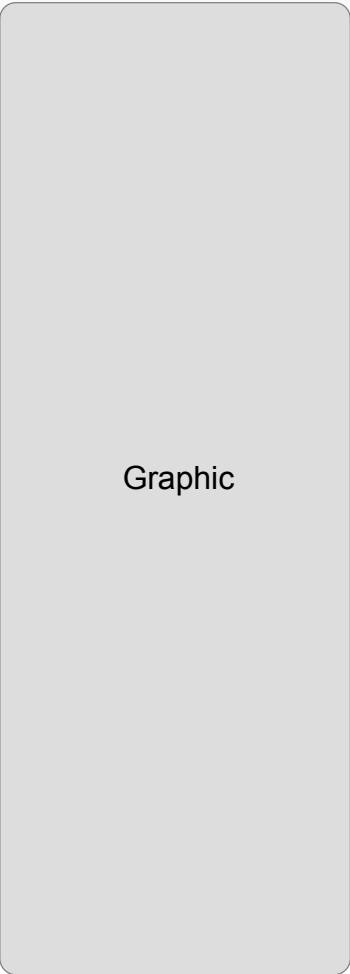


Graphic

Great news [screen name] – you are now a member of mycoke.

**Your Next Step...**  
Close this window and go back to My Coke Rewards to continue redeeming your reward.

Close Browser



Graphic

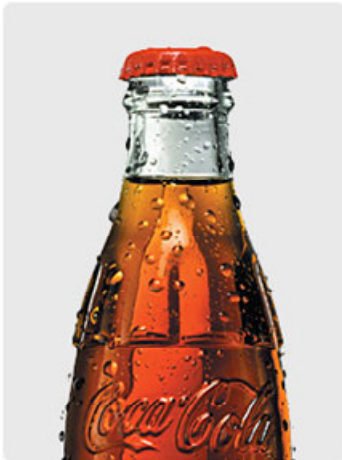
Notes
<p><b>CC Metro Congratulations Page</b></p> <p><b>NOTE: This is a separate MCR version</b></p> <p>Once the user has successfully completed the CC Metro registration process, the user will come to the MCR version of the Congratulations page.</p> <p>1.) The user's screen name should be reflected in both the header at the top of the page – as well as after Congratulations.</p> <p>2.) Since the process of coming from MCR does not migrate any assets, the migration content and corresponding field reflecting the amount of migrated assets will not appear. Alternate content reflecting a successful linkage (without any mention of asset migration) should be provided.</p> <p>3.) The What's Next section provides them with a "Close Browser" button, with messaging explaining that he/she should close this browser to return to the MCR page to complete his/her purchase.</p> <p>Note that when the user clicked on the "CC Metro Registration" link, the page refreshed to reflect wireframe "1.41.1 Rewards Info Completed".</p>

registration

NOTE: This is the Under Age Error Message



Login



### Step 1

Ok, let's get started creating your **My Thirst ID**.

Please enter your date of birth, email address and let us know if you are a resident of the United States.

\* Birthdate: February 14 1997

\* Email Address: abc@abc.com

\* I am a resident of the United States: ☒ Yes ☐ No

Submit

### Error Message

- We're sorry, you must be 13 years old to be a part of mycoke.com

\* Required Fields



Notes



**You must agree to the latest TOS before continuing with your log in.**  
This may necessitate logging out per TOS updates.  
If you do not agree, you will not be able to continue with the log in process.

**TERMS OF SERVICE (TOS): MEMBER AGREEMENT**

### 3. ACCEPTANCE OF TERMS

[illegible]

The Government has agreed to meet all future obligations and obligations as a German member until the end of the month of June 2007. The German government will also pay the interest on the loan of 1 billion euros. The German government will also pay the interest on the loan of 1 billion euros. The German government will also pay the interest on the loan of 1 billion euros.

## 2. DESCRIPTION OF SERVICE

© 2000 Blackwell Science Ltd, *Journal of Internal Medicine* 247: 395–402

Under copyright law, reproduction of any part of this document is prohibited without the express written permission of the copyright owner. This document is the property of the copyright owner and is loaned to you for your personal use only. It is not to be distributed, copied, or otherwise reproduced without the express written permission of the copyright owner. This document is the property of the copyright owner and is loaned to you for your personal use only. It is not to be distributed, copied, or otherwise reproduced without the express written permission of the copyright owner.

The authors gratefully acknowledge the support of the National Natural Science Foundation of China (Grant No. 81703069) and the Shanghai Leading Academic Local Project (Grant No. Y1101). The authors also thank the reviewers for their constructive comments.

[illegible]

## 1. PRIVACY POLICY

Buy a lot on eBay and use an affiliate account to make an additional 10% [eBay Affiliate Program](#). For more information, see our full [eBay Affiliate Program](#).

## 4. CHAIRMAN, WELCOMING THE FREE TRIAL AND FREE MEMBERSHIP

[illegible]

**Payments by Credit Card**

[illegible]

**Complaints:**  
The Complaint Resolution Unit of the Division of Consumer Services of the California Department of Consumer Affairs may be contacted in writing at 12322 N. Mission, #211, Sacramento, CA 95833, or by telephone at 1-800-950-2830.

☐ I agree

☐ I don't agree

**Online Journal of Nursing Informatics & Nursing Research**  
 A Peer-Reviewed Journal of the American Association of Nursing Informatics

## Notes

This is a screenshot of the There.com Ts & Cs which will be presented to users the first time they log into the CC Metro environment. This is outside the scope of this project – as it will be handled by There.com